



**VISIONIX**  
The Vision of the Future

---

**VX40**

Automatic Lensmeter

---

## VX40

### Wave Front Technology

REF 3014-0000-00

This new generation of completely automatic lensmeter is based on Visionix wave front technology. Pressing one button, you have an analysis of the entire frame.

#### Robotics and Precision

With its' innovative system of «frame» support, the VX40 is the only lensmeter in the market which combines automatism with high precision measurement.

#### Easy to Use

The unique lensholder system allows a fast insertion of the frame with only one hand. After pushing the measurement button, the whole process works on it's own. The VX40 allows you to spend more time with your patients and less time with analysis.

#### Automatic Lens Type Detection

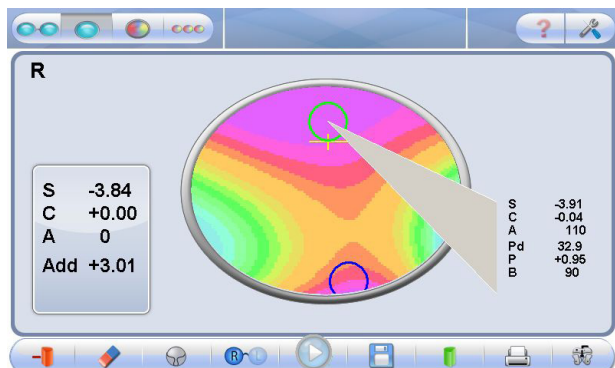
VX40 detects all types of lenses: progressives, office and single vision lenses as well as bifocals. It is compatible with all lens technologies and brands.

#### Complete Analysis

With this instrument, each point of a lens can be studied. Progressive and freeform lenses will no longer be a mystery.

#### Comparison Between Progressives

The whole lens area is studied so even free form progressive lenses will be able to be compared and analyzed.



VX 40 allows the user to verify the prescription on any portion of the lens chosen.

See video on :

<http://www.visionix-wavelenspro.com/>



### Technical specifications

General data	
Dimensions	L 8.66 in P 9.44 in H 17.9in
Weight	20 lbs
Printer	Internal
Screen	LCD/16M colors, 7"
Light source	LED – 730 nm
Working conditions	10 to 40°C
Power supply	115/230V – 50/60 Hz
Standards	CE
Data output	RS-232, Bluetooth
Measurement range	
Sphere power	-15 ~ +10D (step 0.01, 0.06, 0.125, 0.25D)
Cylinder power	0~10D (step 0.01, 0.06, 0.125, 0.25D)
Cylinder axis	0~180° (step 1°)
Addition power	0~± 3.5D (step 0.01, 0.06, 0.125, 0.25D)
Prism power	0~± 10 Δ (step 0.01 Δ)
PD measurement	Mono / Bino
Cylinder	-, +